

EUROTHERM® FLEXIBLE SOLUTIONS

# Eurotherm Review

PC BASED SOFTWARE PACKAGE



*REVIEW AND ANALYSE SECURE DATA*

# Eurotherm Review

Eurotherm Review is a PC based software package that allows for display and printing of secure archived data files from a wide range of Eurotherm instrumentation including the 6000 series, T2550 Programmable Automation Controller, the Eycon™ Visual Supervisor, Eurotherm Suite, and Security Manager. Review can be configured to automatically pull files directly from the instrumentation or a specified folder on an FTP Server, or read directly from the removable media. Alternatively Eurotherm instrumentation supporting Data Recording and Archiving can be configured to push files to a suitably named folder on an FTP Server. Once transferred into the Review database graphical representations of the process data can easily be created.

Eurotherm Review software is available in two versions, Review LITE, which is supplied free with instrumentation that supports Data Recording and Archiving and the enhanced FULL version which provides the user with advanced features such as Automatic print, and Auto-Archive.

## Review LITE features

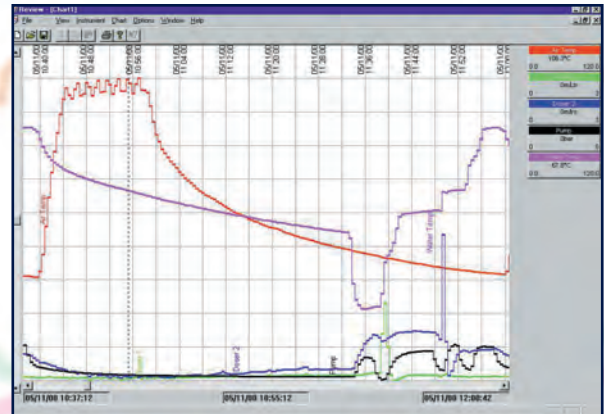
- View Historical Data (PKD + UHH)
- On-line Help menus
- Export to Excel
- Automatic File Transfer and Backup
- Chart Annotation

## Review FULL features (Includes LITE features)

- Automatic Print at end of Batch
- Auto Print to specified Printer
- Auto Print to PDF printer
- Spreadsheet View
- Copy Chart to Clipboard

## Support for InSQL

When enabled files are automatically exported in InSQL format. InSQL files have the same name as the source uhh file but with the extension (as specified in the Options Settings dialogue) will differ. This strategy guarantees that file names are unique (as uhh file names are unique) so there is no danger of files being overwritten before they have been actioned by other software.

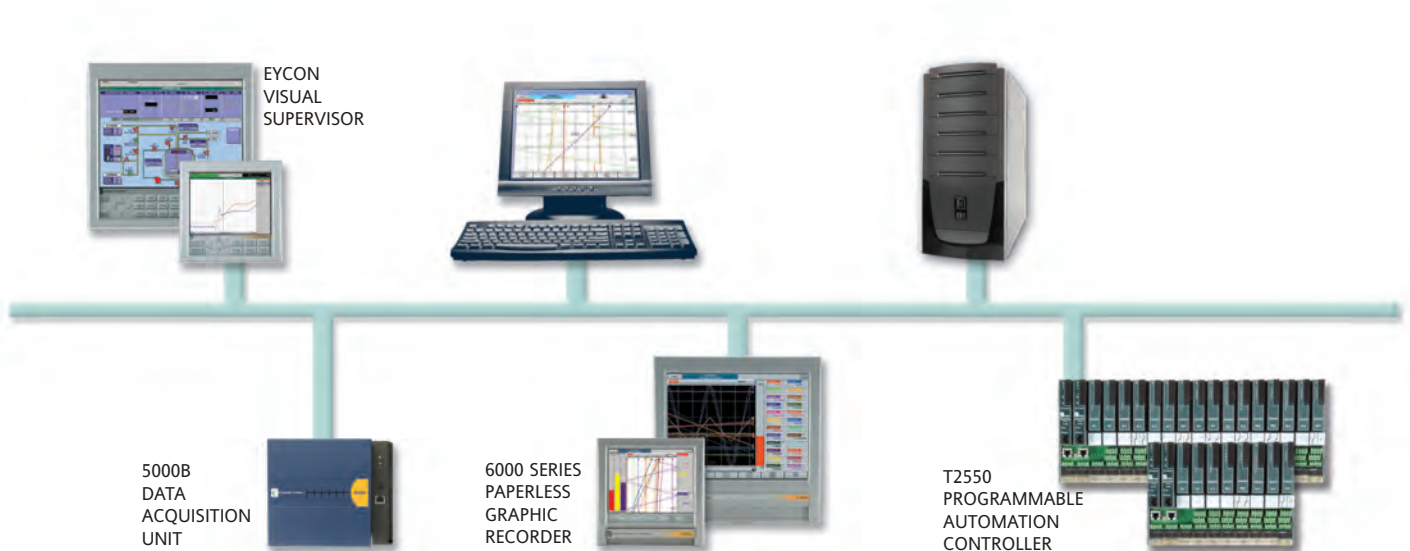


## Support for Redundant Data Recording

The T2550 supports Redundant Data Recording and as such Review has the ability to distinguish between these two sets of data. In order to create a single graphical representation of the process values, Review interrogates the data from both Processors, but only uses history files generated by the Primary Processor, if however there are gaps in this data it will use data generated by the secondary.

## QuickChart

This provides a way to quickly view data from .uhh and .pkd files, without having to get the data from the Review database. The uhh/pkd files and the associated chart can be saved as a QuickChart file, and can be sent to others for viewing. This is a subset of Review, and is included with your Review software.



## Automatic Back-up and File Transfer

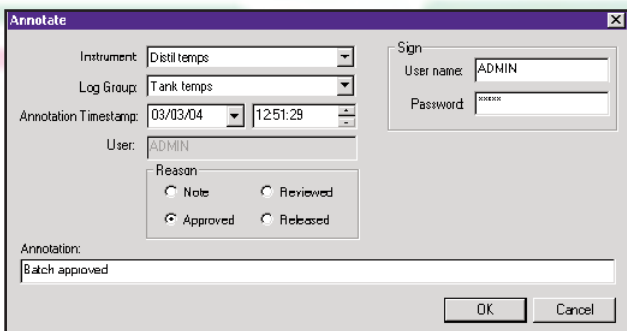
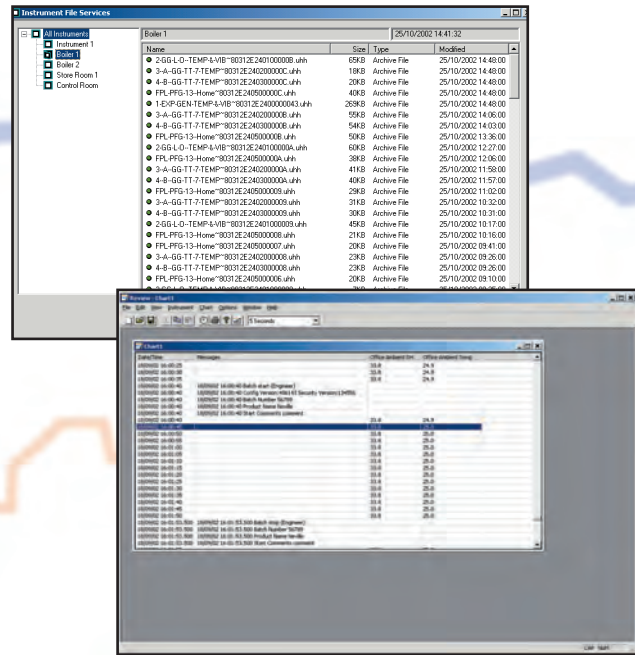
Auto Backup + Transfer provides for automatic periodic copying of selected files from the instrument to the Desktop PC, followed by the transfer of some or all of the received files into the Review database. The operation requires no intervention from the user once set up and can be run as a service.

## Spreadsheet View (FULL)

Allows process data including Audit trail messenger to be viewed and printed as a spreadsheet, the first column will show the timestamp, the second will display messages (if enabled), further columns are provided for channel PV display.

## Sign/Approve Charts

This feature allows the user to add notes, review, approve and release data. The annotation is then added to the uhh file and stored in the database. If security is enabled, the annotation may have to be signed for (Username and Password) according to the Security configuration of the logged in user.



## Running as a Service

When running as a Service, tasks such as automatic back-up and transfer tasks, auto archiving and Database compacting are performed even if the user is logged out

## Search by Batch

A function key has been included that will allow you to search for a batch by name or other properties. Alternatively, a Batch can be found if its specific Time and Date is known. In addition a particular phase within a batch can also be identified and displayed.

## Auto-print at End of Batch (FULL)

The software monitors the networked instrumentation, and if an 'End of Batch' prompt is detected automatically prints a chart to the specified printer, or if the relevant software is available, PDF versions of the charts can also be produced.

## Auto-print to specified Printer (FULL)

An enhancement to Automatic Print, this feature allows a specific destination printer to be specified for each print action.

## Auto-print to PDF (FULL)

This feature allows the user to archive printable electronic copies of the charts using the Adobe Acrobat PDF print driver. (Requires full version of Adobe Acrobat to be installed).

## User Security

With Security enabled, the Security Manager software can be configured to allow or deny user's access to a number of Review functions. Chart Setup for example. The functions that can be enabled/disabled from a user's profiles are determined by the parameters set within Security Manager software.

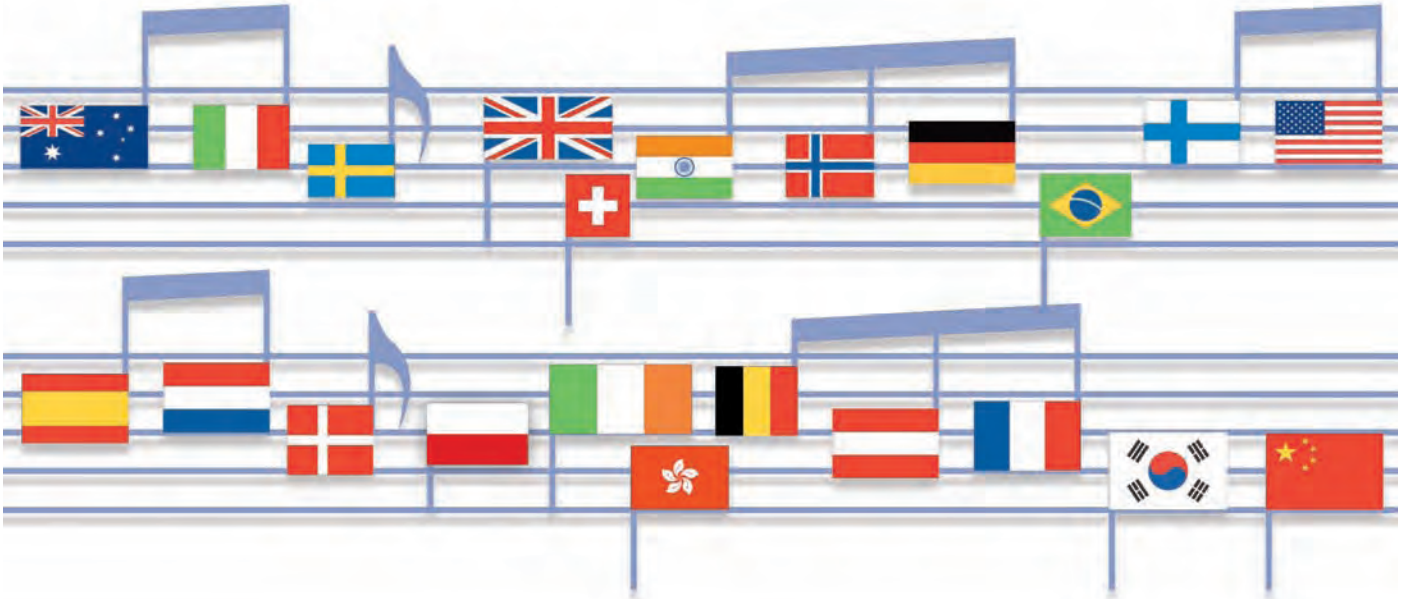
FEATURE	Review		QuickChart	
	FULL	LITE	FULL	LITE
Run Review as a Service	X			
Scheduled Backup from Folders	X			
Automatic Print at End of Batch*	X			
Automatic Print to PDF at End of Batch**	X			
Spreadsheet View	X			
Security Manager Support	X			
Auto Archive from Database	X			
Automatic Backup + Transfer	X	X		
Save Chart	X	X	X	X
Print Chart	X	X	X	X
Copy to Clipboard	X	X	X	X
Search by Batch	X	X	X	X
Auto Zone	X	X	X	X
Scale Print Selection	X	X	X	X
Time Zone Indication	X	X	X	X
Annotate Chart	X		X	
Open Chart Direct from Files or Folders			X	
Open Chart Direct from Removable Media			X	X
Open QuickChart File			X	X
Save QuickChart File			X	X
Lock Chart			X	X

\* Must have Batch enabled on 5000/6000 instrument

\*\* Must have Batch enabled on 5000/6000 instrument, and a PDF writer installed on PC

# Eurotherm: International sales and service

Understanding and providing local support is a key part of Eurotherm business. Complementing worldwide Eurotherm offices are a whole range of partners and a comprehensive technical support team, to ensure you get a service you will want to go back to.



**AUSTRALIA** Sydney  
Eurotherm Pty. Ltd.  
T (+61 2) 9838 0099  
F (+61 2) 9838 9288  
E [info.au@eurotherm.com](mailto:info.au@eurotherm.com)

**AUSTRIA** Vienna  
Eurotherm GmbH  
T (+43 1) 7987601  
F (+43 1) 7987605  
E [info.at@eurotherm.com](mailto:info.at@eurotherm.com)

**BELGIUM & LUXEMBOURG** Moha  
Eurotherm S.A./N.V.  
T (+32) 85 274080  
F (+32) 85 274081  
E [info.be@eurotherm.com](mailto:info.be@eurotherm.com)

**BRAZIL** Campinas-SP  
Eurotherm Ltda.  
T (+5519) 3707 5333  
F (+5519) 3707 5345  
E [info.br@eurotherm.com](mailto:info.br@eurotherm.com)

**CHINA**  
Eurotherm China  
T (+86 21) 61451188  
F (+86 21) 61452602  
E [info.cn@eurotherm.com](mailto:info.cn@eurotherm.com)

*Beijing Office*  
T (+86 10) 63108914  
F (+86 10) 63107291  
E [info.cn@eurotherm.com](mailto:info.cn@eurotherm.com)  
*Guangzhou Office*  
T (+86 20) 38106506  
F (+86 20) 38106511  
E [info.cn@eurotherm.com](mailto:info.cn@eurotherm.com)

**DENMARK** Copenhagen  
Eurotherm Danmark AS  
T (+45 70) 234670  
F (+45 70) 234660  
E [info.dk@eurotherm.com](mailto:info.dk@eurotherm.com)

**FINLAND** Abo  
Eurotherm Finland  
T (+358) 22506030  
F (+358) 22503201  
E [info.fi@eurotherm.com](mailto:info.fi@eurotherm.com)

**FRANCE** Lyon  
Eurotherm Automation SA  
T (+33 478) 664500  
F (+33 478) 352490  
E [info.fr@eurotherm.com](mailto:info.fr@eurotherm.com)

**GERMANY** Limburg  
Eurotherm Deutschland GmbH  
T (+49 6431) 2980  
F (+49 6431) 298119  
E [info.de@eurotherm.com](mailto:info.de@eurotherm.com)

**HONG KONG**  
Eurotherm Hongkong  
T (+85 2) 28733826  
F (+85 2) 28700148  
E [info.hk@eurotherm.com](mailto:info.hk@eurotherm.com)

**INDIA** Chennai  
Eurotherm India Limited  
T (+91 44) 24961129  
F (+91 44) 24961831  
E [info.in@eurotherm.com](mailto:info.in@eurotherm.com)

**IRELAND** Dublin  
Eurotherm Ireland Limited  
T (+353 1) 4691800  
F (+353 1) 4691300  
E [info.ie@eurotherm.com](mailto:info.ie@eurotherm.com)

**ITALY** Como  
Eurotherm S.r.l.  
T (+39 031) 975111  
F (+39 031) 977512  
E [info.it@eurotherm.com](mailto:info.it@eurotherm.com)

**KOREA** Seoul  
Eurotherm Korea Limited  
T (+82 31) 2738507  
F (+82 31) 2738508  
E [info.kr@eurotherm.com](mailto:info.kr@eurotherm.com)

**NETHERLANDS** Alphen a/d Rijn  
Eurotherm B.V.  
T (+31 172) 411752  
F (+31 172) 417260  
E [info.nl@eurotherm.com](mailto:info.nl@eurotherm.com)

**NORWAY** Oslo  
Eurotherm A/S  
T (+47 67) 592170  
F (+47 67) 118301  
E [info.no@eurotherm.com](mailto:info.no@eurotherm.com)

**POLAND** Katowice  
Invensys Eurotherm Sp z o.o.  
T (+48 32) 2185100  
F (+48 32) 2185108  
E [info.pl@eurotherm.com](mailto:info.pl@eurotherm.com)

**SPAIN** Madrid  
Eurotherm España SA  
T (+34 91) 6616001  
F (+34 91) 6619093  
E [info.es@eurotherm.com](mailto:info.es@eurotherm.com)

**SWEDEN** Malmo  
Eurotherm AB  
T (+46 40) 384500  
F (+46 40) 384545  
E [info.se@eurotherm.com](mailto:info.se@eurotherm.com)

**SWITZERLAND** Wollerau  
Eurotherm Produkte (Schweiz) AG  
T (+41 44) 7871040  
F (+41 44) 7871044  
E [info.ch@eurotherm.com](mailto:info.ch@eurotherm.com)

**UNITED KINGDOM** Worthing  
Eurotherm Limited  
T (+44 1903) 268500  
F (+44 1903) 265982  
E [info.uk@eurotherm.com](mailto:info.uk@eurotherm.com)  
[www.eurotherm.co.uk](http://www.eurotherm.co.uk)

**U.S.A.** Leesburg VA  
Eurotherm Inc.  
T (+1 703) 443 0000  
F (+1 703) 669 1300  
E [info.us@eurotherm.com](mailto:info.us@eurotherm.com)  
[www.eurotherm.com](http://www.eurotherm.com)

Eurotherm is also represented in the following countries:

<i>Algeria</i>	<i>Mali</i>
<i>Azerbaijan</i>	<i>Mexico</i>
<i>Bahrain</i>	<i>New Zealand</i>
<i>Bangladesh</i>	<i>Niger</i>
<i>Benin</i>	<i>Nigeria</i>
<i>Bosnia and Herzegovina</i>	<i>Oman</i>
<i>Bulgaria</i>	<i>Pakistan</i>
<i>Burkina Faso</i>	<i>Philippines</i>
<i>Cameroon</i>	<i>Puerto Rico</i>
<i>Canada</i>	<i>Qatar</i>
<i>Czech Republic</i>	<i>Romania</i>
<i>Egypt</i>	<i>Russia</i>
<i>Georgia</i>	<i>Saudi Arabia</i>
<i>Greece</i>	<i>Serbia and Montenegro</i>
<i>Guinea-Conakry</i>	<i>Singapore</i>
<i>Hungary</i>	<i>Slovak Republic</i>
<i>Indonesia</i>	<i>Slovenia</i>
<i>Israel</i>	<i>South Africa</i>
<i>Ivory Coast</i>	<i>Sri Lanka</i>
<i>Japan</i>	<i>Thailand</i>
<i>Jordan</i>	<i>Togo</i>
<i>Kazakhstan</i>	<i>Tunisia</i>
<i>Kenya</i>	<i>Turkey</i>
<i>Kuwait</i>	<i>Turkmenistan</i>
<i>Latvia</i>	<i>UAE</i>
<i>Lithuania</i>	<i>Ukraine</i>
<i>Malaysia</i>	<i>Uzbekistan</i>

ED57

Represented by:

© Copyright Eurotherm Limited 2008

Invensys, Eurotherm, the Eurotherm logo, Chessell, EurothermSuite, Mini8, Eycon, Eyris, EPower and Wonderware are trademarks of Invensys plc, its subsidiaries and affiliates. All other brands may be trademarks of their respective owners.

All rights are strictly reserved. No part of this document may be reproduced, modified, or transmitted in any form by any means, nor may it be stored in a retrieval system other than for the purpose to act as an aid in operating the equipment to which the document relates, without the prior written permission of Eurotherm limited.

Eurotherm Limited pursues a policy of continuous development and product improvement. The specifications in this document may therefore be changed without notice. The information in this document is given in good faith, but is intended for guidance only.

Eurotherm Limited will accept no responsibility for any losses arising from errors in this document.

Part No. HA028081 Issue 3



Printed on  
recycled paper  
in England XX.XX